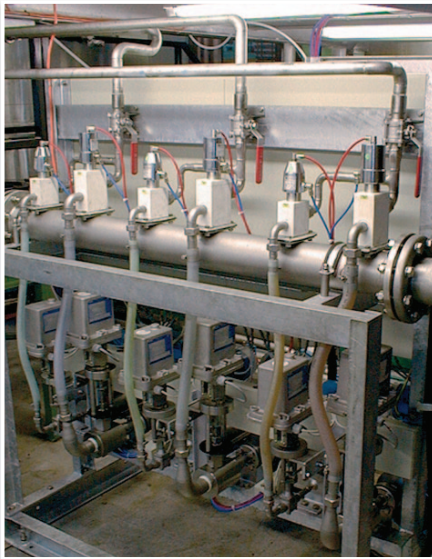
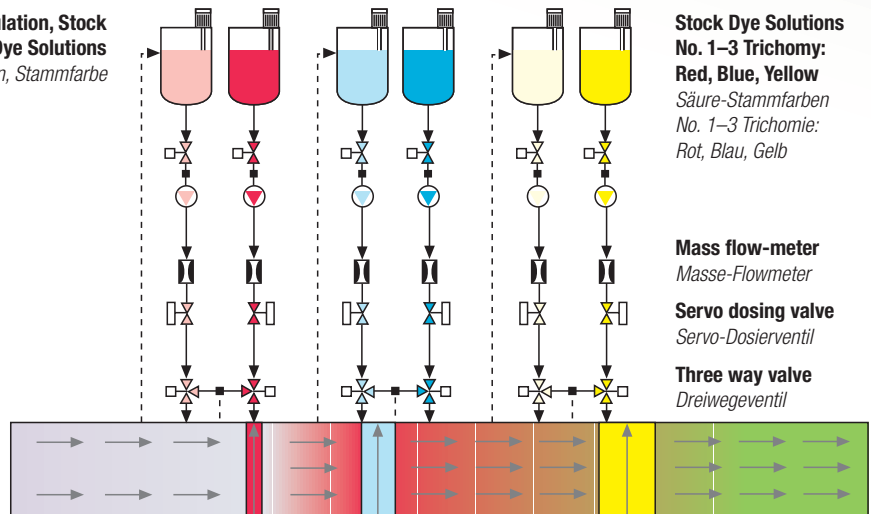


INSTACOLOR



Circulation, Stock Dye Solutions
Zirkulation, Stammfarbe



Stock Dye Solutions No. 1–3 Trichomy:
Red, Blue, Yellow
Säure-Stammfarben
No. 1–3 Trichomie:
Rot, Blau, Gelb

Mass flow-meter
Masse-Flowmeter
Servo dosing valve
Servo-Dosierventil

Three way valve
Dreivegeventil

Static mixer, water feeding with auxiliaries
Statischer Mischer, Blindflotte

CARPET DYEING

Continuous production of dye liquid on the basis of dye stock solutions, water and auxiliaries

Water and auxiliaries are first blended homogeneously and the dye stock solutions are dispensed into this basic liquid in an additional mixer

Dosing of individual components

Metering of liquid pick-up

Consumption record

Automatic operation mode

Flying color change during production process with short transitions

No liquid residues

Color on demand

For trichromatic color, special colors and auxiliaries

Two separate liquid feeding systems

Dosing quantities according to recipe and production capacity

PLC control with operator terminal

Link to process control system

TEPPICHFÄRBen

Kontinuierliche Herstellung der Farbflotte aus Farbstammlösungen, Wasser und Hilfsmitteln

Wasser und Hilfsmittel werden zuerst homogen vermischt und die Farbstammlösungen in einem weiteren Durchlaufmischer in dieser Trägerflotte dosiert

Einzelkomponentendosierung

Messung der Flottenaufnahme (*Pick Up*)

Verbrauchserfassung

Automatikbetrieb

Fliegender Farbwechsel bei laufender Produktion mit kurzen Übergängen

Keine Flottenreste

Color on demand

Für Farbtrichomien, Sonderfarben und Hilfsmittel

Zwei getrennte Flottenzuführsysteme

Dosiermengen entsprechend Rezept und Produktionsleistung

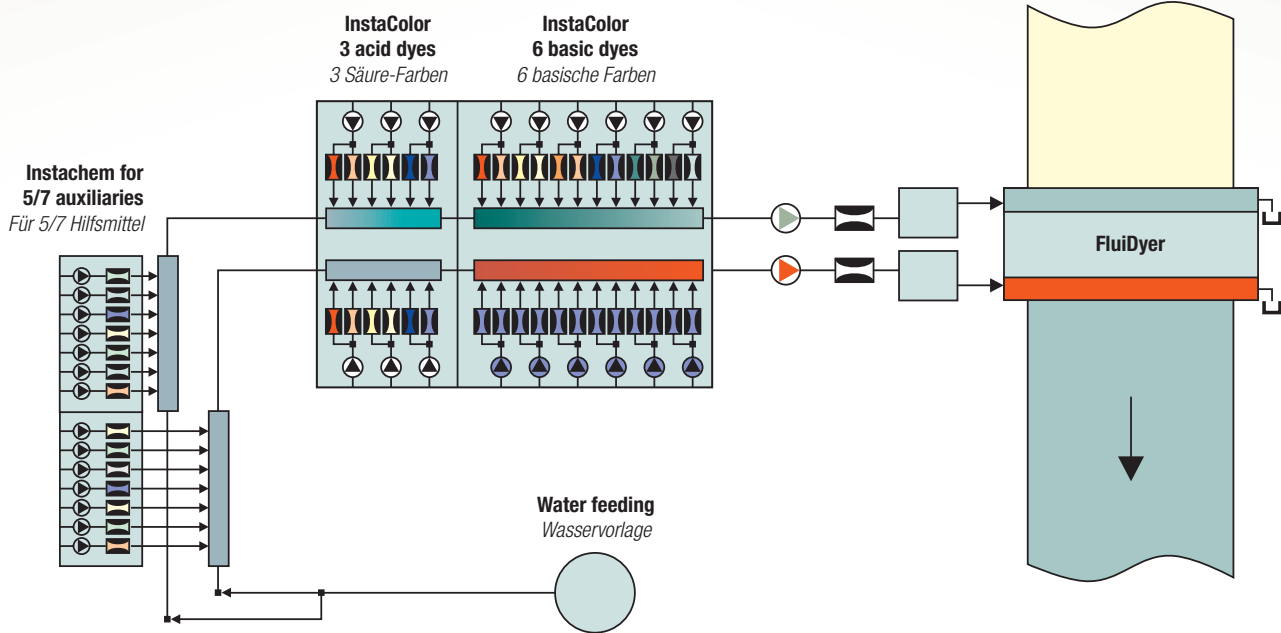
SPS-Steuerung mit Bedienterminal

Anbindung an Prozessleitsystem



KUSTERS ■ CARPET
a division of KUSTERS ZIMA

ACCURATE, EFFICIENT, INNOVATIVE TECHNOLOGY.



Since Kusters established the first continuous dyeing range for carpets in 1966, we have delivered more than 180 ranges to our customers world-wide. Continuous dyeing was the basis for an increased growth of the carpet industry due to higher productivity and cost reduction of up to 75%. The innovation began with application systems, accompanied with improved dyes and chemicals. The first ranges were for solid shade only, followed by multicolor and print dye ranges, which utilized new types of applicators. We have delivered ranges for solid shade, multicolor, printed, combination

print and solid, and carpet tiles for nylon, polyester and wool fibers. Our latest innovation enables our customers to reduce inventory by millions of dollars, minimize waste, and shorten the cycle time from order to delivery. Conventional dye, which is made in tanks, is a slow and time-consuming process. Our Instacolor system, in combination with our quick change applicators, now allows our customers to “dye to order”. Our customers are now dyeing over 200 individual orders in 24 hours. We look forward to showing you how to implement this new technology.



For more information call **864.576.0660** or visit **KustersZima.com/kusters-carpet**



KUSTERS ■ CARPET
a division of KUSTERS ZIMA